

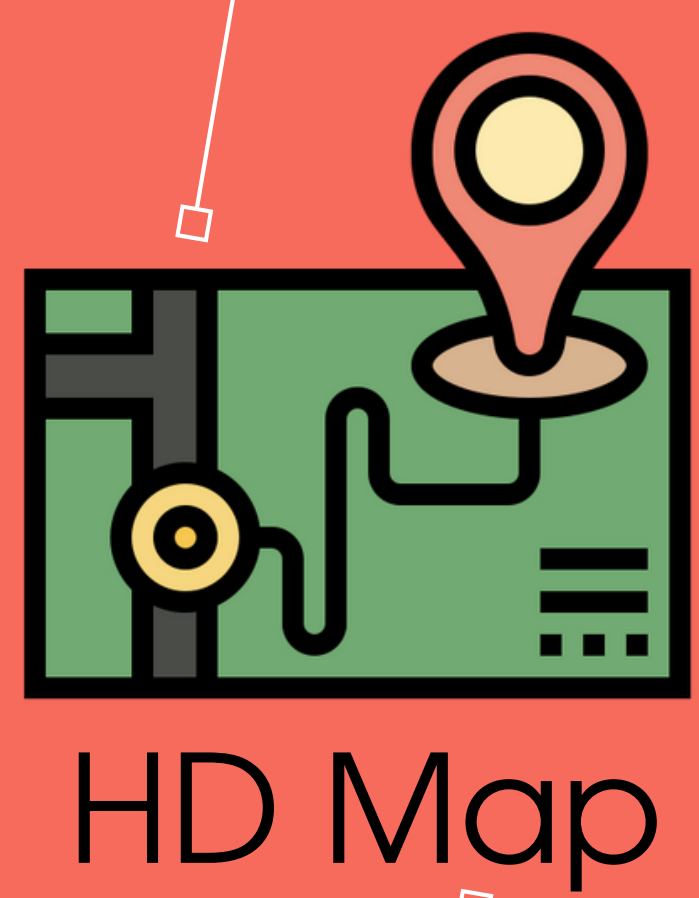
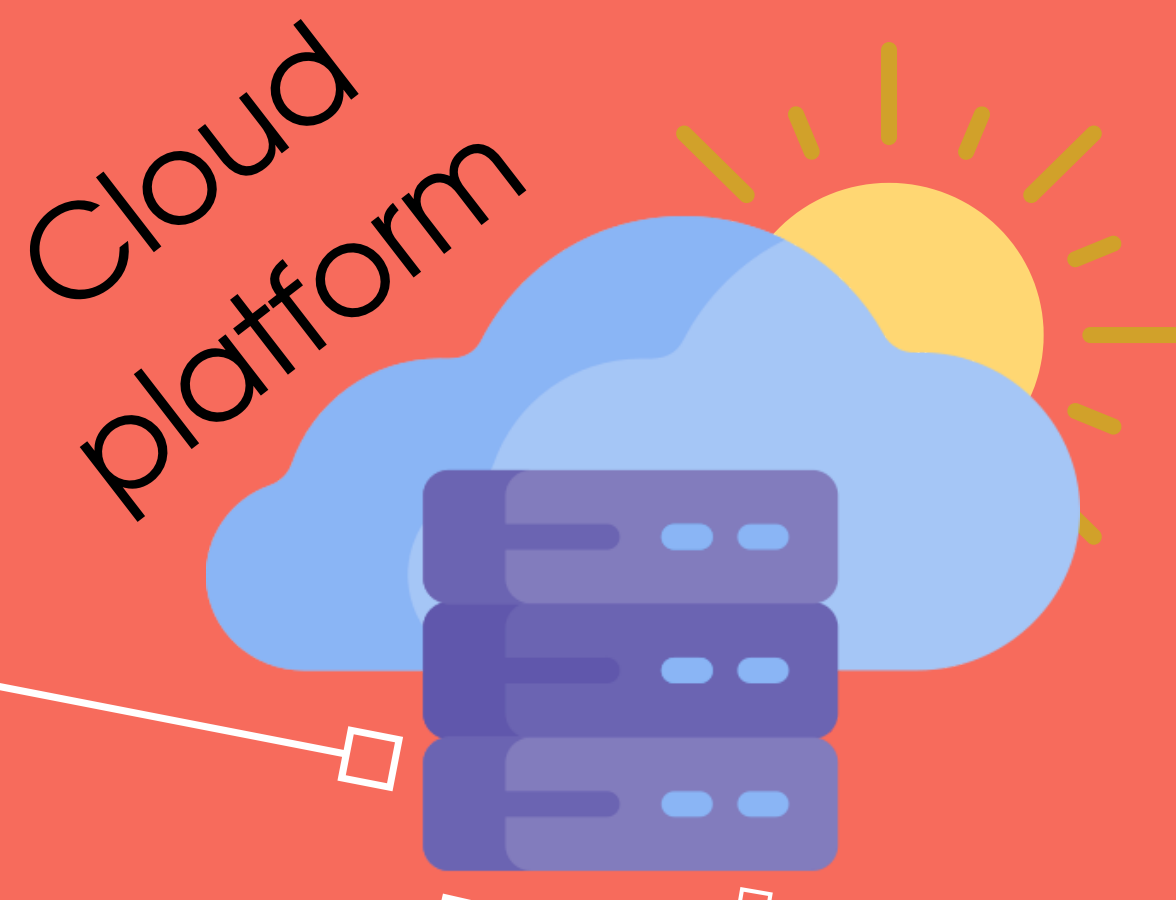
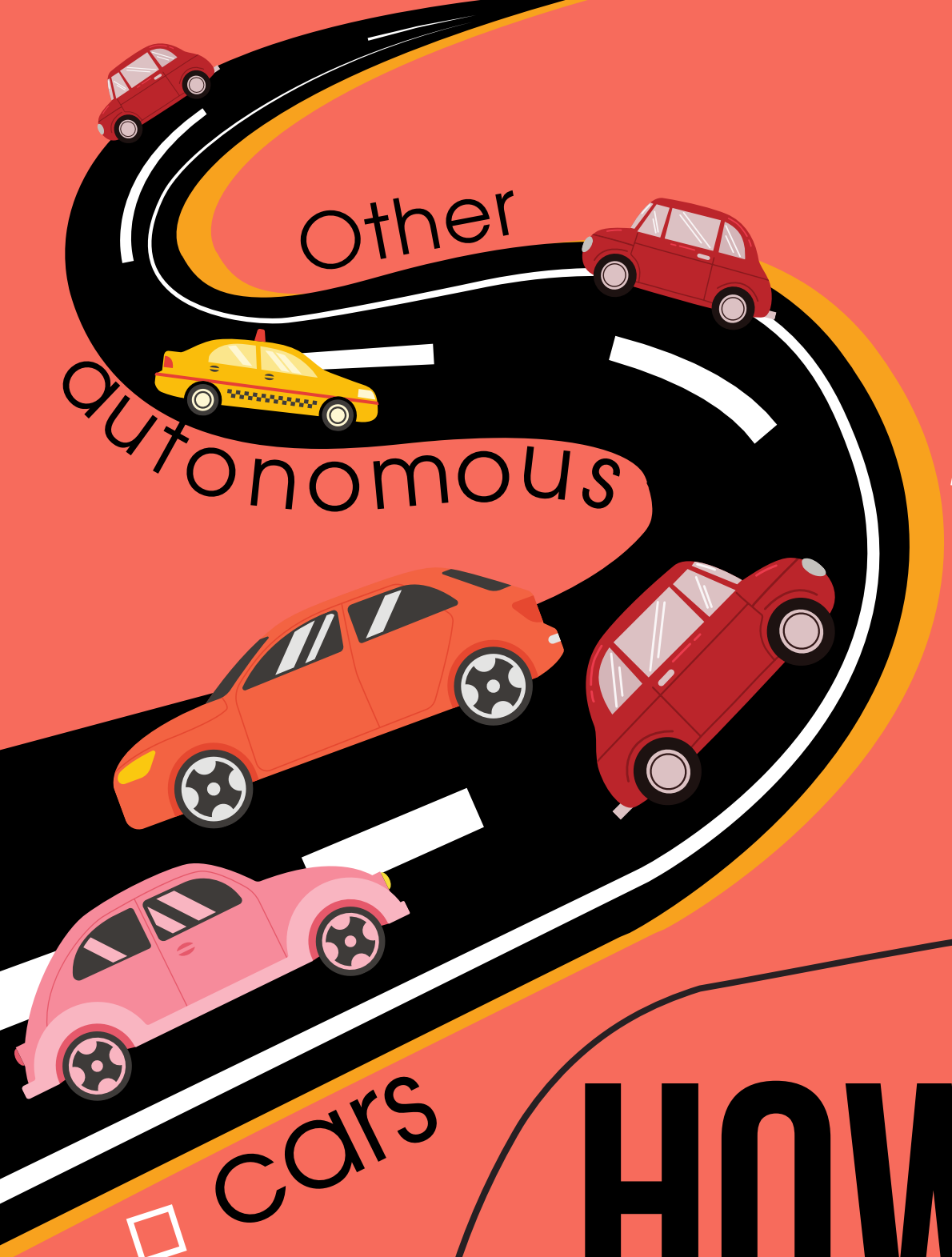


Research on

AUTONOMOUS CARS

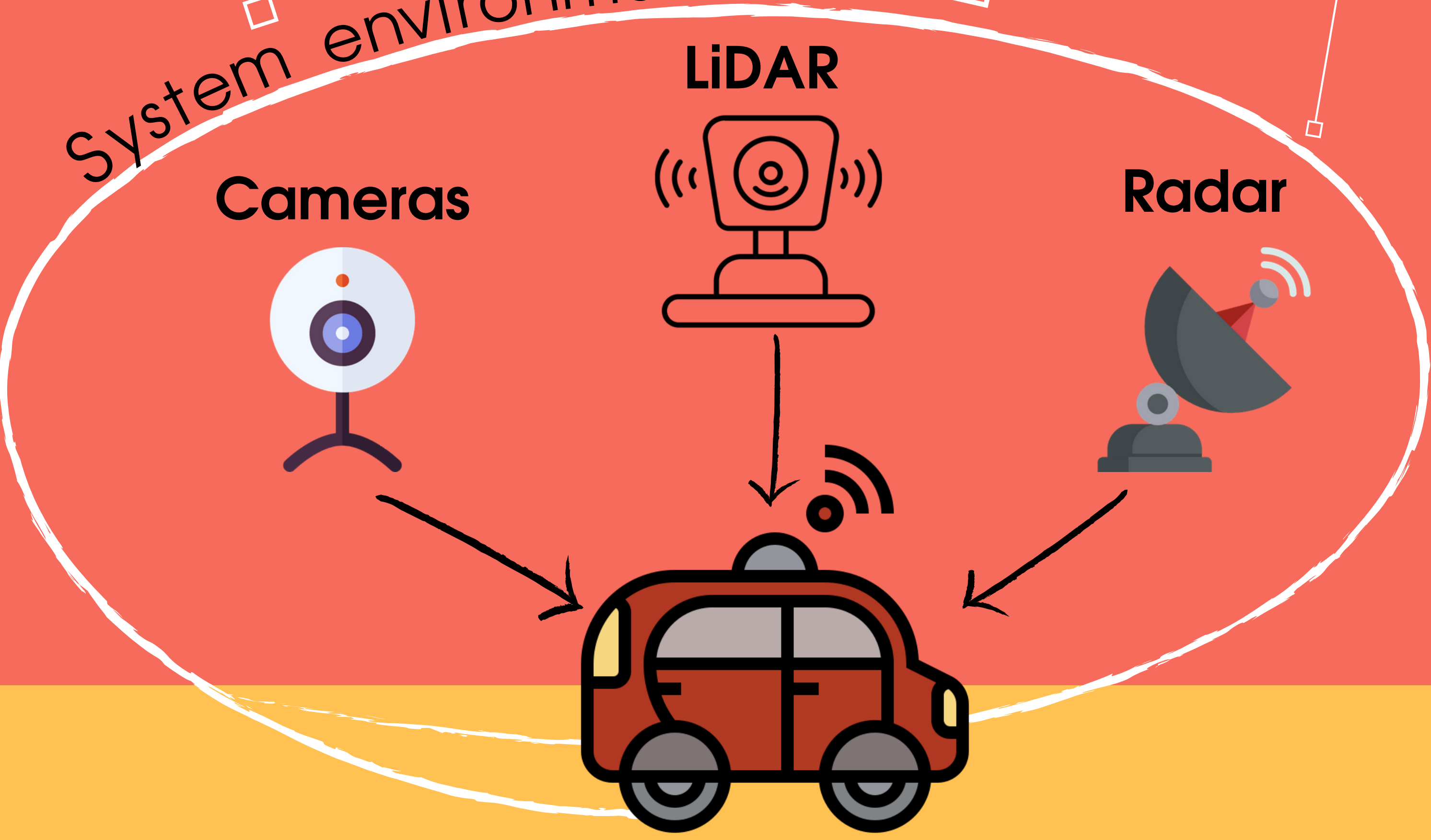
and its effects on society, infrastructure
and social behaviour





HOW DOES IT WORK?

System environment



INTERNAL PROCESSES:

- Self-driving vehicle collects information using cameras, LiDAR and radar.
- Self-driving cars use cloud platforming to unite several aspects.
- The cloud platform can easily and quickly update HD-map.
- HD-map is used by self-driving cars to manoeuvre.
- Your self-driving car communicates with other autonomous cars to avoid dangerous situations.





Improved safety on roads



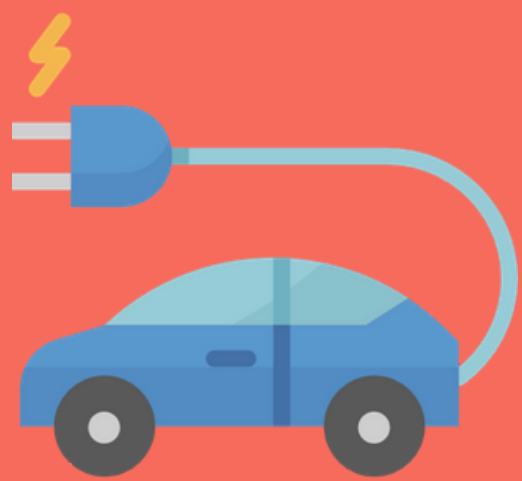
Possibility for carsharing



Infrastructure optimization



Ethical discussions on decision making

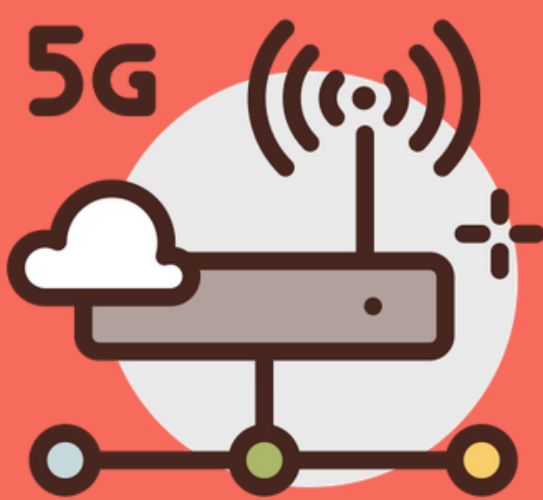


High probability of electric-powered self-driving cars



UX and UI design are important for autonomous vehicles

CHANGES CAUSED BY THE TECHNOLOGY



Implementation of 5G



Regulatory changes that allow the use of autonomous cars



Modification of transport patterns